

## Medical Quiz

Saeed Alhindi, MD, CABS, FRCSI\*

A one-month-old male infant was presented with left side neck swelling since birth. The swelling is increasing in size with time and is associated with stridor. The patient developed a fever two days prior to admission.

Look at the figures below and answer the following questions:

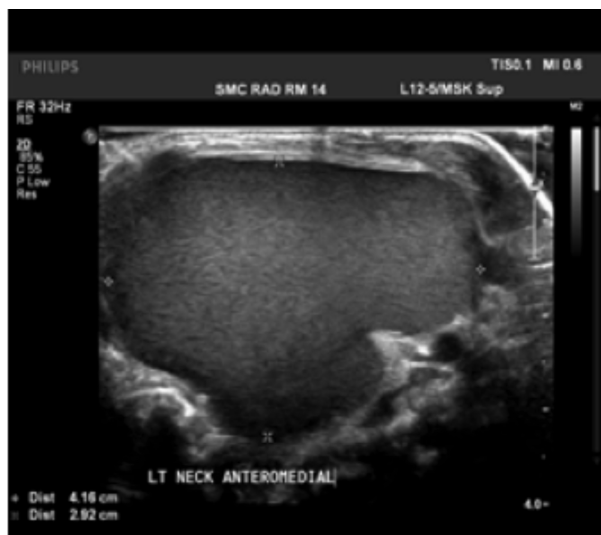


Figure 1



Figure 2

Q1. What are the radiological tests used in figure 1 and figure 2?

Q2. Describe the findings in figure 1 and figure 2.

Q3. What are the two most likely differential diagnoses?

Answers on page 249

---

\* Assistant Professor, Arabian Gulf University  
Consultant Pediatric Surgeon  
Department of Pediatrics  
Salmaniya Medical Complex  
P.O. Box 12, Manama  
The Kingdom of Bahrain  
E-mail: sjalhindi@gmail.com